

Regentville Public School R. A. P.



Schoolhouse Road Regentville 2745
Ph 02 4733 1615 Fax 02 4733 4022
regentvill-p.school@det.nsw.edu.au

Wednesday, 12 October 2016

GET READY FOR KINDERGARTEN

Kindergarten Enrolments 2017

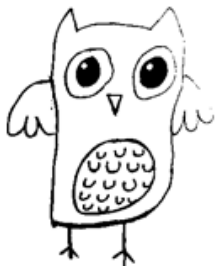
We are still accepting Kindergarten Enrolments for 2017, if you have not enrolled your child please contact the office.

If you have already received your enrolment package please return it to the office with all the original paperwork required for processing as soon as possible to ensure you receive your Kindergarten Orientation Day information. Letters have been sent out to all 2017 Kindergarten families who have returned their paperwork.

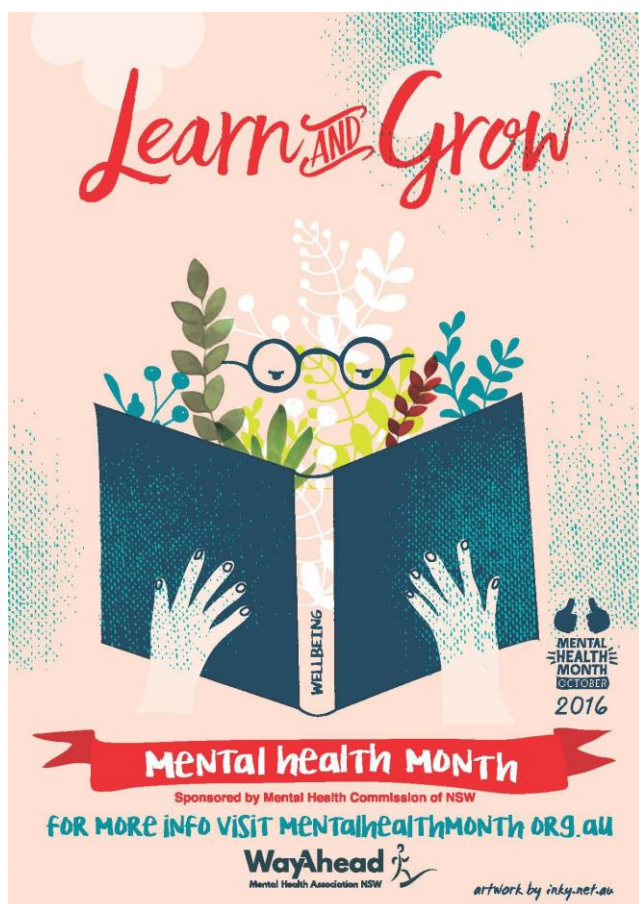
Instructions for booking your enrolment meeting and orientation dates were included in the above mentioned letter. If you have not received this information or have outstanding paperwork to return please contact the office.

Dates for the Calendar	
25 October	Milo Blast T20 Cricket Regional Finals
25 October	Ballroom Dancing Championships
25 October	Public Speaking- Surveyors Creek PS
25/26 October	2017 Kindergarten Interviews
26 October	SRC School Rainbow Day
27 October	Public Speaking- Regentville PS
31 October	Public Speaking- Werrington PS
2 November	2017 Kindergarten Interviews
3 & 4 November	Year 4 Yarramundi Camp
9 November	Kindergarten Orientation Day 1
7 November-18	School Swimming and Water Safety Program
14 November	Public Speaking Finals
24 November	Kindergarten Orientation Day 2
25 November	Last day awards trading
Payments Due	
	General School Contribution \$45 per student or \$90 per family (Instalments can be paid at any time)
26 October	School Swimming and Water Safety Program \$60

Reggie says congratulations to the following people for being our weekly winners!



	K-2	3-6
Safe	Brody – 1G	Madison – 3G
Respectful	Tilly- KJ	Chelsea – 3G
Learner	Jett – 1L	Shaun – 6J
Green	Peyton– KC	



WE'RE LOST!

Our school lost property is overfilling again with winter jumpers and jackets. Please come and check if you've lost an item of clothing as we will be donating left over items to the clothing pool.

Thank you,
Mrs McMillan, Mrs Gerrish,
Mrs Gibbs and Mrs Beck.



Transport
for NSW

School Travel Update

2017 Applications

School Student Transport Scheme Applications open 10 October 2016

From Monday 10 October 2016 parents, guardians and students over 16 years, will be able to apply for 2017 School Student Transport Scheme (SSTS) travel pass by visiting www.transportnsw.info/school-students

Information for parents and students

School travel passes only need to be updated when a student:

- changes address, or
- changes school or campus.

A new application is required when:

- applying for an SSTS pass for the first time,
- enrolling in Kindergarten,
- progressing from Year 2 to Year 3,
- progressing from Year 6 to Year 7, or
- requesting an additional pass as a result of a new shared parental responsibility situation.

For more information on planning your school travel, visit www.transportnsw.info or contact your local operator.

Passes for 2017 travel

Opal network: Please remind ALL your students to keep their School Opal cards for travel in 2017. These cards will be automatically deactivated for school holidays and then reactivated for school travel in term one. Current School Opal card can be updated with changes of school, home address or operator.

Rural and regional travel: Student's travelling with operator issued passes will receive a new pass in the new school year.

CHRISTMAS GINGERBREAD EXTRAVAGANZAS

Come & have fun making an amazing Christmas Gingerbread creation and hear about the wonderful message of Christmas. We'd love to see you!
And don't forget to bring extra lollies for decorating – the more, the yummiier!

Women's Gingerbread House EXTRAVAGANZAS

WHEN TUES 22ND NOV @7PM
WED 23RD NOV @7PM

COST \$30 / GINGERBREAD
HOUSE
(\$35 FOR GLUTEN FREE)

Bring your friends (high school age up) to make a gorgeous Gingerbread House

Family Christmas Gingerbread EXTRAVAGANZAS

WHEN THURS 24TH NOV @7PM
(YR 3 AND ABOVE)

SAT 26TH NOV @10AM
(KIDS OF ALL AGES)

COST \$30 / GINGERBREAD
HOUSE
(\$35 FOR GLUTEN FREE)

\$20 / CHRISTMAS TREE
(\$22 FOR GLUTEN FREE)

Bring the whole family to make a fantastic Christmas tree together or you may prefer to make a house!

BOOKING & PAYMENT ESSENTIAL BY SUN 13TH NOV

ONLINE: trybooking.com/NDTT



Glenmore Park
Anglican Church

*cnr of William Howell Dr
& Pritchard Pl, Glenmore Park*

**OFFICE: 4733 1635
WEB: gpa.church**

Gateway Family Services

Life Story

Foster Carers Support Group



Help your child to express their journey.
Learn techniques to help your child map their life.

Come & Relax, enjoy some craft, meet new people.
Children are welcome to come along and play.

When: Tuesday 1st, 8th 15th November 2016

Time: 10:00am – 12noon

**Where: Blaxland Uniting Church &
Noiseworks**

70 Old Bathurst Road, Blaxland

Register at Gateway: 1300 316 746



For more information and individual flyers go to:
www.gatewayfamilyservices.org.au or www.facebook.com/GatewayFS
Gateway family services parent group program is funded by DSS and
NSW FACS.

Gateway works collaboratively with community partners to bring
parent groups to communities from St Marys to Blackheath.
Thanks to MMM for providing childcare for the Daytime groups.

Gateway encourages, supports & respects diversity in families &
communities. Our Groups are open to everyone.



123 MAGIC

Emotional Coaching Parenting Group

Are you struggling with your child's behaviour? 123 Magic might be the group you have been looking for. Learn how to:

- Manage unwanted behaviour – helping your children to stop doing what you don't want them to do
- Encourage good behaviour – helping your children to start doing what you want them to do
- Emotion coaching – helping children to identify and manage emotions that drive behaviour
- Strengthen your relationship – reinforcing the bond between you and your child- having fun!

Come along to our 3 Week Parent Group!

For parents and caregivers with children aged from 0 – 12 years old

LOCATION: Lawson Community Pre-School

16 Honour Ave, Lawson

WHEN: Monday 7th, 14th, 21st Nov. 2016

TIME: 7:00pm – 9:00pm

COST: Gold Coin Donation

Register at Gateway: 1300 316 746



Gateway encourages, supports & respects diversity in families & communities. Our Groups are open to everyone.



Let's Talk About.... The Strong Willed & Sensitive Child

Parenting styles can differ...
So what can we do?

- ✓ To understand and respond to the "strong willed" and "sensitive child"
- ✓ The meaning of secure boundaries for a child
- ✓ How to maintain family relationships while addressing behaviours of the "strong willed" and "sensitive child"
- ✓ Nurturing and sustaining communication with your children/partner/ support person

Barry Palm is an Educational and communication consultant. For the past 35 years he has been supporting parents, carers and teachers to appreciate and enjoy their roles in nurturing and guiding children to be confident and competent people.



Gateway encourages, supports & respects diversity in families & communities. Our Groups are open to everyone.

Come along to our 3 Discussion Seminar's

Facilitated by Barry Palm

LOCATION: Blaxland Uniting Church

70 Old Bathurst Road, Blaxland

WHEN: Thursday 3rd, 10th, 17th Nov. 2016

TIME: 11:00am – 1:00pm

COST: Gold Coin Donation

Register at Gateway: 1300 316 746

CHILDCARE AVAILABLE – MUST BE BOOKED



Circle of Security

Parenting Group

Relationships make the world go around

Come along to our 7 week Parent Group!

For parents and caregivers with children aged from 0 – 12 years old

LOCATION: Mt Victoria Public School

Great Western Hwy, Mt Victoria

ENTER school from Victoria St, Mt Victoria

WHEN: Monday 24th Oct – 5th Dec 2016

TIME: 9.30-11.30am

COST: Gold Coin Donation

Register at ENRICH: 02 4782 5326

LIMITED CHILDCARE AVAILABLE – MUST BE BOOKED



Gateway encourages, supports & respects diversity in families & communities. Our Groups are open to everyone.



Circle of Security

Parenting Group

Relationships make the world go around

Come along to our 7 week Parent Group!

For parents and caregivers with children aged from 0 – 12 years old

LOCATION: Tanderra Out of School Care

14 Raymond Road, Springwood

WHEN: Tuesday 18th Oct – 29th Nov 2016

TIME: 10:00am – 12:00pm

COST: Gold Coin Donation

Register at Gateway: 1300 316 746

CHILDCARE AVAILABLE – MUST BE BOOKED



Gateway encourages, supports & respects diversity in families & communities. Our Groups are open to everyone.

AUSTRALIA'S YOUTH PRESENTS

A SELF DEFENCE KARATE AND SAFETY AWARENESS PROGRAM

For boys and girls
Ages 5 – 16
In Sydney Since 1994

Website – karate-kids.com.au

INSTRUCTORS TRAINED SPECIFICALLY
FOR TEACHING CHILDREN AND TEENS

SELF DEFENCE ONLY IS TAUGHT

CLASSES DIVIDED BY AGE
AND EXPERIENCE

FROM BEGINNER TO
BLACK BELT



DEVELOP SELF CONFIDENCE

IMPROVE CONCENTRATION

BUILD COORDINATION

BUILD SELF ESTEEM

IMPROVE STUDIES

MAKE FRIENDS

Only \$12.00 Per Week
With a \$2.00 Rego per term
No Extra Grading Fees!

INSTRUCTOR IS A KARATE CHAMPION AND ISKA INSTRUCTOR OF THE YEAR

Location: Penrith South Public School,
Corner of Jamison Rd. and Evan St., South Penrith
Classes are every Monday for 9 Weeks (Every School Term)
New and Returning Registration: Monday, 17 October, 2016
New Students can also join on: Mondays, 24 Oct., 31 Oct.

New and Returning
Students
Ages 5-8
Class Time 4:00 to 4:40PM

New Students
Ages 9-16
and Returning Students
Class Time 4:45 to 5:25PM

Returning Students please see website at www.karate-kids.com.au for class times.

REGISTRATION WILL BE ACCEPTED UP TO THE THIRD WEEK OF TERM. NO PRE-REGISTRATION IS NECESSARY,
JUST TURN UP 10 TO 15 MINUTES BEFORE CLASS TIME ABOVE IF POSSIBLE.... SEE YOU THERE!
FOR FURTHER INFORMATION, CONTACT MATT KLEIN ON 9904-5667



Lamrocks
SOLICITORS

Ph: 02 4731 5688
www.lamrocks.com.au

The team at Lamrocks Solicitors has been helping people from across the Nepean and Blue Mountains region for over 100 years.

If you need advice or assistance with a legal issue, contact the experienced lawyers at Lamrocks for friendly, professional advice that offers real value-for-money.

Property & Conveyancing | Family Law | Compensation Law | Wills & Estates

Contributing to the community since 1882



Art Classes for kids in Term 4, 2016!

First trial lesson for free!

Using a range of materials and inspired by art history, students will make 2D and 3D artworks. Tuition includes materials and a visual diary. 8 weeks during the term.

At Emu Plains Community centre:

Wednesday 4-6 pm, \$140

Thursday 4-5:30 pm, \$130

At Emu Plains PS: Saturday 10 am -12 noon

More details: www.reach4stars.com.au

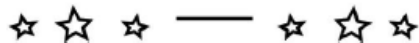
REACH
FOR THE
STARS

Contact:

Na'ama Atzmon-Simon

0413-694-030

naama@reach4stars.com.au



Follow us on Twitter

@Regentville_PS



Museum of Fire 28th annual

Doll, Bear & CRAFT SHOW

Saturday
OCTOBER 29

Sunday
OCTOBER 30

9:30am
to 4:00pm

@ The Museum of Fire
1 Museum Drive, Penrith

Jewellery & Craft
Reborn Dolls
Dolls & Accessories
Wooden Toys & Furniture
Doll Houses & Supplies
Teddy Bears & Making Supplies
Unique Handmade Products
Aromatherapy

Adults \$6 • Concession \$4 • Children \$2

For more information call 4731 3000 or visit www.dollbearcraftfair.com.au