

# Regentville Public School R. A. P.



Schoolhouse Road Regentville 2745  
Ph 02 4733 1615 Fax 02 4733 4022  
[regentvill-p.school@det.nsw.edu.au](mailto:regentvill-p.school@det.nsw.edu.au)

Wednesday, 14 March 2018

## Save the Date School Photos 12 April 2018



More information  
to follow soon



### Dates for the Calendar

15 March	Graffiti Education – Year 5
21 March	Stage 2 Geography Excursion to Taronga Zoo
23 March	Last day Awards Trading
28 March	Stage 3 – World of Maths Incursion
29 March	Easter Hat Parade
30 March	Good Friday – No school today
2 April	Easter Monday – No school today
4 April	Stage 3 Cake Stall
5 April	School Cross Country Carnival
6 April	PSSA finishes
12 April	School Photo Day
12 April	School Disco
13 April	School ANZAC Service

### Payments Due

16 March	Year 3 & 4 Textbook Payment \$11.00
16 March	Stage 2 Geography Excursion to Taronga Zoo - \$38.00
16 March	First Instalment – Year 5 Camp \$110.00
16 March	Year 6 Polo Shirt \$40 each
20 March	ICAS Competitions Year 2
20 March	ICAS Competitions Year 3 - 6
23 March	Stage 3 Word of Maths Incursion \$5.00
Anytime throughout the year	Voluntary School Contribution can be paid at any time \$45/\$90 Online payments can be made via the school website and clicking the “make a payment” button.



## **NSW Premier's Reading Challenge 2018**

The NSW Premier's Reading Challenge has now started. The Challenge aims to encourage a love of reading.

Children in K-2 will all be completing the Reading Challenge at school. I will log their reading records.

Children in Y3-4 will be encouraged to record what they read on a sheet which will be kept in the library. These students will be given some time during their library lessons once or twice a term to transfer their student reading records to the website.

Students in Years 5 and 6 will be responsible for recording what they have read online.

More information about the Challenge can be found on the website:

<https://online.det.nsw.edu.au/prc/home.html>

To login students use their Department of Education username and password.

Those students who complete the Premier's Reading Challenge will receive a certificate in December.

Thank you and happy reading.

Mrs Healey  
Teacher Librarian

# School Carparks

As you are aware, the carparks at the front and rear of the school are for staff parking only.

However, there are an ever increasing number of cars that enter and exit the carpark during high pedestrian activity times. Recently we have had a number of near misses in the carpark and as such we have reviewed the policy and procedures around carpark use.

We have looked closely at the Department of Education guidelines and policies, had input from staff and raised the issue for lengthy discussion at several P&C meetings.

As a means to keeping the students at Regentville safe, commencing Monday 12 March, one gate of each carpark will be closed from 8.30am to 9.30am each morning and 2pm to 3.15pm each afternoon.

We are aware that from time to time circumstances call for parents to enter and exit the carpark during the high pedestrian activity times in order to drop off or pick up their child who may have a temporary condition that makes outside school drop off difficult. In these cases we ask that parents contact Mrs Maraga or Mr Bamford to enquire about obtaining a temporary carpark permit.

If you have any concerns or questions about the new arrangements please feel free to contact Mrs Maraga or Mr Bamford at school.



**REGENTVILLE  
K-2**

# EASTER HAT PARADE

**THURSDAY 29TH  
MARCH, 2018**

Have a crafty time at home  
making an Easter- inspired hat  
with your child!

Come and watch the parade  
from 9:30AM in front of the hall.

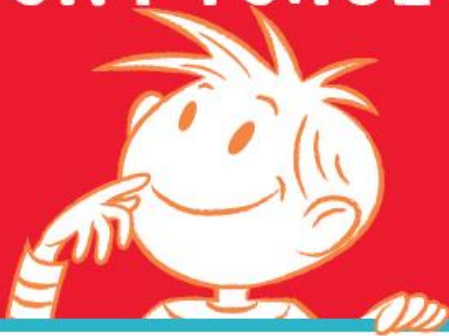
EASTER RAFFLE will be drawn  
after the parade.

Tea, coffee and cake available  
to purchase on the day.

PosterMyWall.com



# DON'T FORGET!



**SCHOLASTIC**  
**Book Club**  
orders are due:

20 March 2018



Regentville Public School celebrates  
150 years in 2018  
and we're starting to plan now.



Photo courtesy of Ron Vaughn

Do you know any of the people in this photo?  
Please contact us if you or someone you know was  
part of this important moment in our  
school's history.

Do you have any other early photos you can share?  
[regentvilleps150@gmail.com](mailto:regentvilleps150@gmail.com)

• Jazz • Tap • Ballet • Lyrical • Hip Hop • Acrobatics •

# Supreme Dance

Coming to  
Glenmore Park  
March 2018

**Glenmore Park Open Day**

12<sup>th</sup> March

Glenmore Park Community Centre

From 3:45

Contact us for full timetable

Abbey – 0431 834 526  
[info@supremedance.com.au](mailto:info@supremedance.com.au)

Visit: [www.supremedance.com.au](http://www.supremedance.com.au)  
Find us on Facebook

Classes  
from \$7

From 3  
years

# National Assessment Program – Literacy and Numeracy (NAPLAN) 2018

## LETTER TO PARENTS

In May 2018 the National Assessment Program – Literacy and Numeracy (NAPLAN) will be completed by students in Years 3, 5, 7 and 9. NAPLAN has the support of all State and Territory Education Ministers and will assess the literacy and numeracy skills of students across Australian schools.

The results of the tests will provide important information to schools about what each student can do, and will be used to support teaching and learning programs. Parents will receive a report indicating their child's level of achievement. Each student's level of achievement will be reported against the national minimum standard.

Student background information (student name, gender, date of birth, language background and Aboriginality) will be collected as part of the National Assessment Program. This information is treated confidentially and held securely to ensure that every student's right to privacy is maintained.

The NAPLAN tests will be conducted from 15-17 May 2018.

TUESDAY 15 MAY	WEDNESDAY 16 MAY	THURSDAY 17 MAY
<b>Language Conventions</b> (Spelling, Punctuation and Grammar)	<b>Reading test</b>	<b>Numeracy test</b>
<b>Writing test</b>		

In the numeracy tests students do not require any measuring tools such as rulers or protractors. In Years 7 and 9 there will be one numeracy test with two parts: Part A calculator is allowed and Part B where calculators are not to be used. For the calculator test, the student should use the calculator that they currently use at school.

**Friday 18 May** – A 'catch-up' day is scheduled for students who missed a test or were absent on a test day. Students may be considered for exemption from the tests if they:

- are newly arrived in Australia (less than one year before the test) and with a language background other than English, **or**
- have significant intellectual disability and/or significant co-existing conditions which severely limit their capacity to participate in the tests.

All other students are expected to participate in the tests. Disability adjustments which reflect the student's normal level of support in the classroom may be provided. Large print, braille, coloured paper versions and electronic tests are available to meet the needs of individual students.

Access to disability adjustments or exemption from the tests must be discussed with the school principal and a parent or carer consent form must be signed.

Students may be withdrawn from NAPLAN by their parent or carer. This is a matter for consideration by parents in consultation with the school principal. If you wish to withdraw your child from the tests, a parent or carer consent form must be signed.

Please make an appointment with the principal of the school your child attends if you would like to discuss your child's participation in NAPLAN.

Additional information about NAPLAN can be found at <http://www.nap.edu.au/naplan/parent-carer-support>



# EASTER RAFFLE

Tickets are \$1.00 each or 3 for \$2.00

Tickets will be sent home on Monday 19<sup>th</sup> of March.

**RAFFLE TICKETS AND MONEY ARE DUE BACK TO SCHOOL ON  
Monday 26<sup>th</sup> of MARCH.**

Please hand the tickets and money to your classroom teacher.

Draw will take place on Thursday 29<sup>th</sup> of March.

More ticket books will be available from the canteen after the 19<sup>th</sup> of March.

## DONATION OF EASTER EGGS

**Wednesday 28<sup>th</sup> of March.**

The P&C are asking parents to donate an Easter egg to go towards the many baskets of eggs that will be used as prizes for the raffle.

Please hand in the eggs to your teachers on Wednesday 28<sup>th</sup> of March.

There will be a collection box in every classroom.

**NOTE: There is only one day to hand the eggs in as the draw is the following day.**

**PLEASE DO NOT SEND EGGS IN BEFORE/AFTER THIS DATE.**

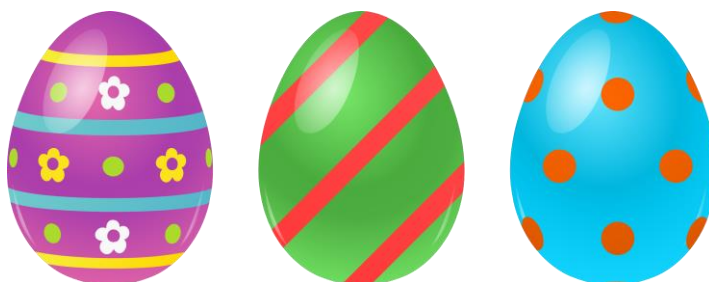
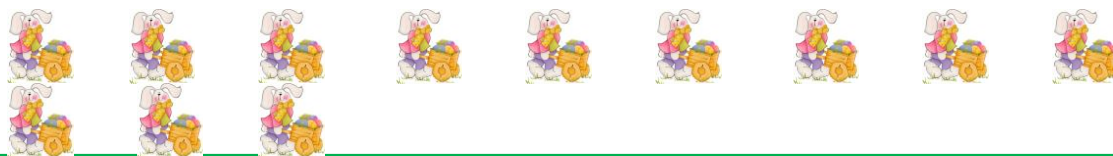
**WANTED: - CANE BASKETS AND EASTER BAGS** - If you no longer require these items at home, we would love to take them off your hands.

Please take them to the Canteen to assist in our raffle.

**VOLUNTEERS:** - required for wrapping of Easter baskets on Wednesday 28<sup>th</sup> March. (Approximately 2 hours). Leave your name and contact details at the canteen.

Please meet at the TLC room (next to library) at 9am.

Please note, to volunteer you must have a WWCC number, or ID check on file in the office before this date. You will be unable to volunteer if either one is not on file before this date. Checks will be done to ensure all details are updated.





# Karate Classes

Come join us for some fun and learn great life skills!



Our karate classes aim to instil young people with confidence while learning a range of skills in coordination, self defence and stranger danger from our highly skilled instructors! Karate is a fun and interactive way to get fit and meet new friends!

- Self Defence
- Discipline
- Confidence
- Fitness

When: 3 Times a week Including School Holidays

Ages: Open to all ages! Loads of FUN!

Where: Regentville School

1 Free Class When you Call & Book.

Why Pay For Classes,  
try 1 class for FREE.

Nothing to lose, Everything to gain.

For more information or to book your place contact your

Sensei on 0416136423



**BOOKINGS ARE ESSENTIAL!**